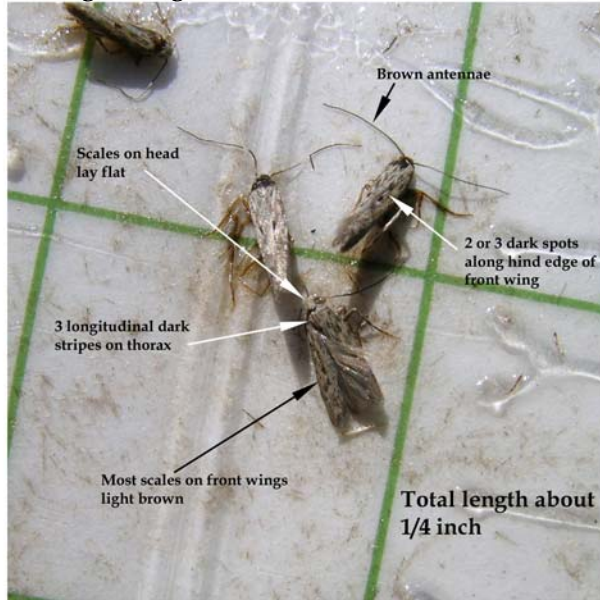


Potato Tuberworm

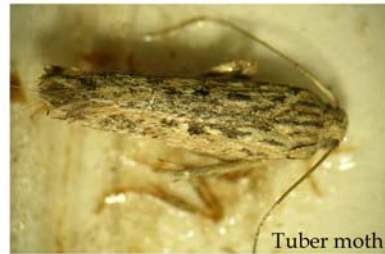
See also: <http://www.potatoes.com/research.cfm>



Recognizing Adults



Markings and color can vary



Many other small moths like these are found in tuber moth traps placed near native shrubs and herbs

These are NOT Tuber Moth



Trapping suggestions:

1. Replace lures every 6 weeks
2. Use Delta style traps
3. Store lures in freezer until use
4. Replace sticky cards weekly to maintain stickiness
5. Place traps in or near potato fields, about 12" above ground
6. Handle the lures with tweezers

Washington State Potato Commission

Potato Tuberworm

See also: <http://www.potatoes.com/research.cfm>



Foliar Damage



Larvae live in the leaves and stems during the growing season

Tuber Damage



Tubers exposed at surface are most likely infested

This tuber had 5 large larvae

Tuberworm life stages



Eggs

Mature larva
~1/2 inch long

Larva in tunnel

Cocoon on potato